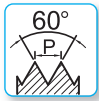
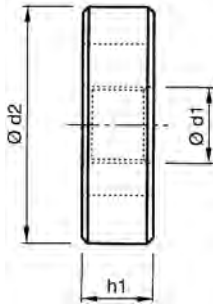




## FILIERE TONDE IMBOCCO CORRETTO

ROUND SPLIT DIES WITH SPIRAL POINTED - FILIÈRES RONDES, ENTRÉE GUN

DIN - EN 22568



Filettatura sinistra - LH  
Left hand  
Filetage Gauche - LH

Inox  
Stainless Steel

Materiale - Material - Matériau

HSS

HSS

HSE

Imbocco - Chamfer - Entrée

1,75xP

1,75xP

1,75xP

Tolleranza - Tolerance - Tolérance

ISO / 6g

ISO / 6g

ISO / 6g

Trattamento superficiale - Surface treatment - Revêtement

BR

BR

BR

Ød <sub>1</sub> M	P mm	Ød <sub>2</sub>	h <sub>1</sub>	CODICE - CODE		
				100-99M...	100S99M...	100E99XM...
2	0,4	16	5	○	-	-
2,2	0,45	16	5	○	-	-
2,3	0,4	16	5	○	-	-
2,5	0,45	16	5	○	-	-
2,6	0,45	16	5	○	-	-
3	0,5	20	5	○	○	○
3,5	0,6	20	5	○	-	-
4	0,7	20	5	○	○	○
4,5	0,75	20	7	○	-	-
5	0,8	20	7	○	○	○
6	1	20	7	○	○	○
7	1	25	9	○	○	-
8	1,25	25	9	○	○	○
9	1,25	25	9	○	○	-
10	1,5	30	11	○	○	○
11	1,5	30	11	○	○	-
12	1,75	38	14	○	○	○
14	2	38	14	○	○	○
16	2	45	18	○	○	○
18	2,5	45	18	○	○	○
20	2,5	45	18	○	○	○
22	2,5	55	22	○	○	○
24	3	55	22	○	○	○
27	3	65	25	○	○	○
30	3,5	65	25	○	○	○
33	3,5	65	25	○	○	○
36	4	65	25	○	○	○
39	4	75	30	○	○	○
42	4,5	75	30	○	○	○
45	4,5	90	36	○	○	○
48	5	90	36	○	○	○
52	5	90	36	○	○	○

Confezione: Singola  
Box: Single  
Colis: Unique

€ Pag. listino - Price list - Liste des prix

111

111

111

● Standard

○ Disponibilità da richiedere, prezzo a listino  
On enquiry, standard price-list / Stock à vérifier

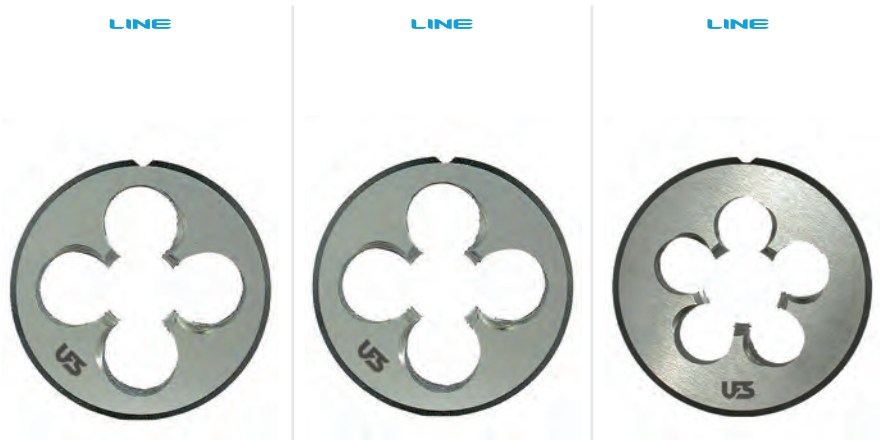
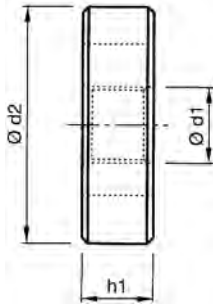
★ Solo a richiesta  
Only on request / Sur demande



## FILIERE TONDE IMBOCCO CORRETTO

ROUND SPLIT DIES WITH SPIRAL POINTED - FILIÈRES RONDES, ENTRÉE GUN

DIN - EN 22568



Materiale - Material - Matériau
Imbocco - Chamfer - Entrée
Tolleranza - Tolerance - Tolérance
Trattamento superficiale - Surface treatment - Revêtement

HSS
1,75xP
ISO / 6g
BR

HSS
1,75xP
ISO / 6g
BR

HSSSE
1,75xP
ISO / 6g
BR

Ød <sub>1</sub> MF	P mm	Ød <sub>2</sub>	h <sub>1</sub>	CODICE - CODE		
				110-99M...	110S99M...	110E99XM...
18	2	45	14	○	○	○
20	1	45	14	○	○	○
20	1,5	45	14	○	○	○
20	2	45	14	○	○	○
22	1	55	16	○	-	-
22	1,5	55	16	○	-	-
22	2	55	16	○	-	-
24	1	55	16	○	-	-
24	1,5	55	16	○	-	-
24	2	55	16	○	-	-
25	1	55	16	○	-	-
25	1,5	55	16	○	-	-
25	2	55	16	○	-	-
26	1	55	16	○	-	-
26	1,5	55	16	○	-	-
26	2	55	16	○	-	-
27	1	65	18	○	-	-
27	1,5	65	18	○	-	-
27	2	65	18	○	-	-
28	1	65	18	○	-	-
28	1,5	65	18	○	-	-
28	2	65	18	○	-	-
30	1	65	18	○	-	-
30	1,5	65	18	○	-	-
30	2	65	18	○	-	-
32	1	65	18	○	-	-
32	1,5	65	18	○	-	-
32	2	65	18	○	-	-
33	1	65	18	○	-	-
33	1,5	65	18	○	-	-
33	2	65	18	○	-	-

Segue diametri  
Diameters, to be continued - Diamètres à suivre

Pag. 239

Confezione: Singola  
Box: Single  
Colis: Unique

€ Pag. listino - Price list - Liste des prix

112

113

113

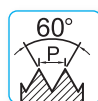
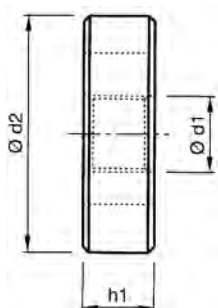
● Standard

○ Disponibilità da richiedere, prezzo a listino  
On enquiry, standard price-list / Stock à vérifier

★ Solo a richiesta  
Only on request / Sur demande

**DIN - EN 22568**

LINE



Materiale - Material - Matériau

**HSS**

Imbocco - Chamfer - Entrée

**1,75xP**

Tolleranza - Tolerance - Tolérance

**ISO / 6g**

Trattamento superficiale - Surface treatment - Revêtement

**BR**

Ød <sub>1</sub> MF	P mm	Ød <sub>2</sub>	h <sub>1</sub>	CODICE - CODE
				110-99M...
34	1	65	18	○
34	1,5	65	18	○
35	1	65	18	○
35	1,5	65	18	○
35	2	65	18	○
36	1,5	65	18	○
36	2	65	18	○
36	3	65	25	○
38	1	75	20	○
38	1,5	75	20	○
38	2	75	20	○
39	1,5	75	20	○
39	2	75	20	○
39	3	75	30	○
40	1,5	75	20	○
40	2	75	20	○
40	3	75	30	○
42	1,5	75	20	○
42	2	75	20	○
42	3	75	30	○
45	1,5	90	22	○
45	2	90	22	○
45	3	90	36	○
48	1,5	90	22	○
48	2	90	22	○
48	3	90	36	○
50	1,5	90	22	○
50	2	90	22	○
50	3	90	36	○
52	1,5	90	22	○
52	2	90	22	○
52	3	90	36	○

 Confezione: Singola  
 Box: Single  
 Colis: Unique

€ Pag. listino - Price list - Liste des prix

**112**

● Standard

 ○ Disponibilità da richiedere, prezzo a listino  
 On enquiry, standard price-list / Stock à vérifier

 ★ Solo a richiesta  
 Only on request / Sur demande









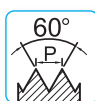
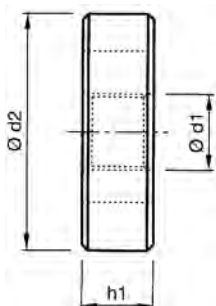


## FILIERE TONDE IMBOCCO CORRETTO

ROUND SPLIT DIES WITH SPIRAL POINTED - FILIÈRES RONDES, ENTRÉE GUN

DIN - EN 22568

LINE



Materiale - Material - Matériau

HSS

Imbocco - Chamfer - Entrée

1,75xP

Tolleranza - Tolerance - Tolérance

-

Trattamento superficiale - Surface treatment - Revêtement

BR

Ød <sub>1</sub> * NPT	TPI	Ød <sub>2</sub>	h <sub>1</sub>
1/16	27	25	10
1/8	27	38	10
1/8	27	30	10
1/4	18	38	15
3/8	18	45	15,3
1/2	14	45	20
3/4	14	65	20,2
3/4	14	55	20,2
1"	11,5	65	25
1" 1/4	11,5	75	25,6
1" 1/2	11,5	90	26
2"	11,5	105	26,9

\*ANSI/ASME B1.20.1

Ød <sub>1</sub> * NPTF	TPI	Ød <sub>2</sub>	h <sub>1</sub>
1/16	27	25	11
1/8	27	38	10
1/4	18	38	15
3/8	18	45	15
1/2	14	45	20
3/4	14	65	20,2
3/4	14	55	20,2
1"	11,5	65	25

\*ANSI/ASME B1.20.3

420-99NPT... CODICE - CODE

\*

o

\*

o

o

o

o

o

\*

o

o

o

430-99NPTF... CODICE - CODE

\*

o

o

o

o

o

\*

o

Confezione: Singola  
Box: Single  
Colis: Unique

€ Pag. listino - Price list - Liste des prix

115

● Standard

○ Disponibilità da richiedere, prezzo a listino  
On enquiry, standard price-list / Stock à vérifier

★ Solo a richiesta  
Only on request / Sur demande



